

## How do you modify the Xbox 360 Live Vision web cam to see Infrared



Fig. 1 - Xbox 360 Live Vision web cam

First you have to get the focus ring off cause that's what is keeping the front face of the camera from coming off other than the clips. In order to get the off you have to pull on it and unscrew it away from the camera. You will feel resistance but it's the focus ring stop scraping past each other.



Fig. 2 - Get the gray focus ring off

Once it unscrews completely you will find that the focus ring assembly will not come out even though it's flopping all over the place. Don't worry about getting it out just yet cause when you remove the front face of the camera it will allow you to see what is stopping you from removing it and take the necessary action thereof. Once the focus ring is unscrewed

completely take a flat head screwdriver and gently pry the case apart. I started at the bottom and worked my way around. You will hear a sharp snap telling you that you unsnapped it and the case will begin to open. Work your way around the case till it's completely unsnapped and pull it apart.



Fig. 3 - Take a flat head screwdriver and gently pry the case apart

Now you have the 2 main parts of the camera apart, one with the focus ring and the other with the PCB board screwed to it and the base. As you can see the front face has the focus ring in it and it will not slide out due to the focus stop again. you have to tilt the focus ring so that the highest part is where the focus stop is and the lowest part is on the opposite side. Then take the focus ring and pull and twist till it's free. The whole process seems brutal with all the twisting and pulling but I took my camera apart without any damage except for some minor aesthetic damages i did while prying the case apart.



Fig. 4 – Separate this parts

Once the board is visible, there are 2 screws holding the board to the back housing. When you remove these screws, the board comes out and there are 2 more screws holding the black lens housing to the board. Unscrew these and you will see the glass filter attached to the black housing.

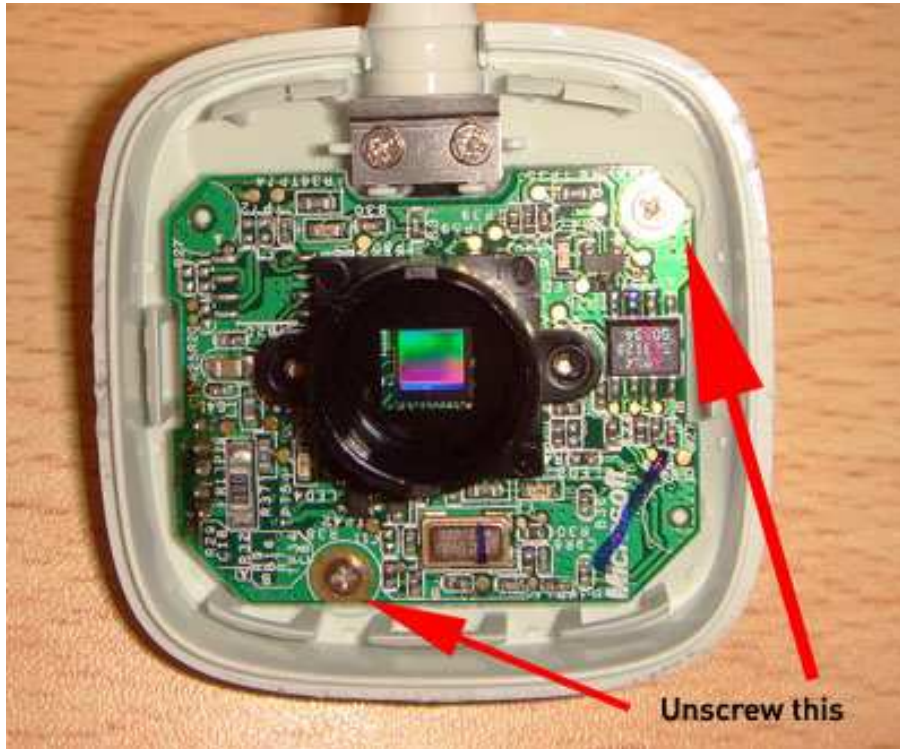


Fig. 5 – Remove these screws

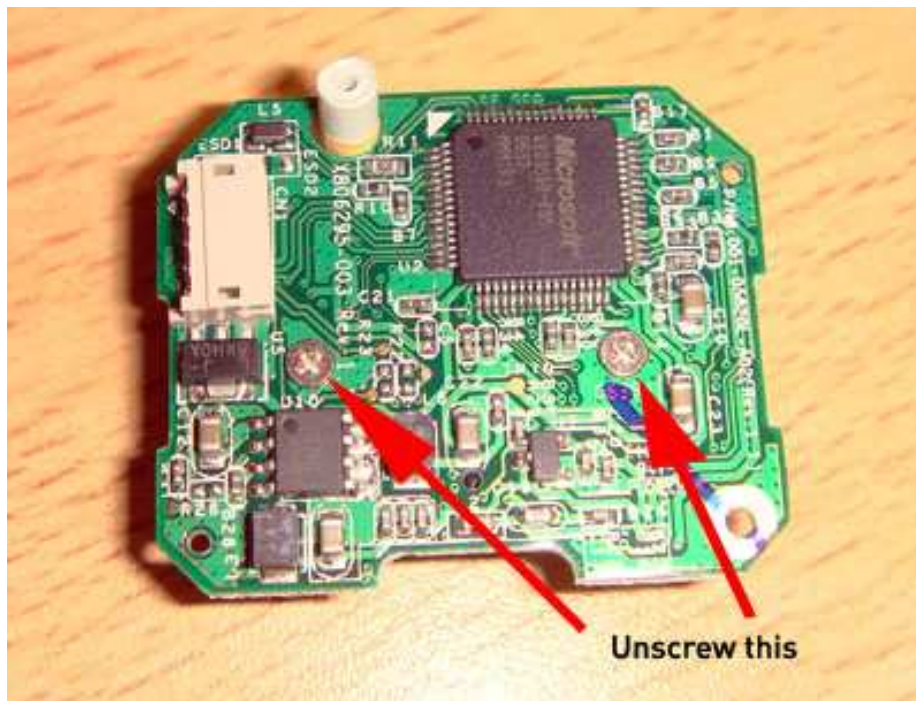


Fig. 6 – Then remove these





Fig. 7 – Separate parts

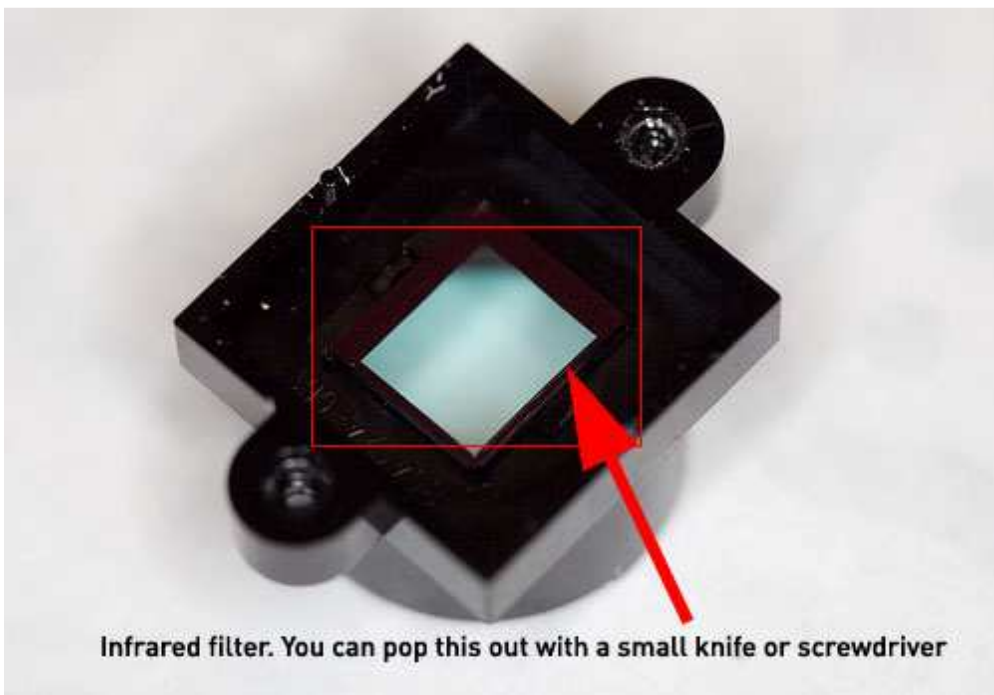


Fig. 8 – Remove the IR filter

Once you remove the IR filter then place in 1 to 2 small pieces of exposed negative film. You can snap everything back together.

Text from estengineer [<http://nuigroup.com/forums/member/497/>] and Fairlane [<http://nuigroup.com/forums/member/1050/>] like some photos. Compiled and add some photos: by Jose Maria Dinis [<http://nuigroup.com/forums/member/464/>] and Vasco Bila [<http://nuigroup.com/>]